

Change to SI's No.1

10. SIGNALS MADE ASHORE and RACING AREA – Paragraph 10.2 is changed to read:

The position of the Racing Areas A & B may change from day to day. Their approximate position will be displayed each day on the official notice board.

Change to SI's No.2

13.3 Start Sequence Racing Area B is changed as follows:-

Fleets	Fleet Flags	Start Sequence	Course
Standard Apprentice Masters Standard Masters	Green & Red	1 <sup>st</sup> Start	Outer
Standard Grand Masters	Blue	2 <sup>nd</sup> Start	Inner
Standard Great Grand Masters	Yellow	3 <sup>rd</sup> Start	Inner

Change to SI's No.3

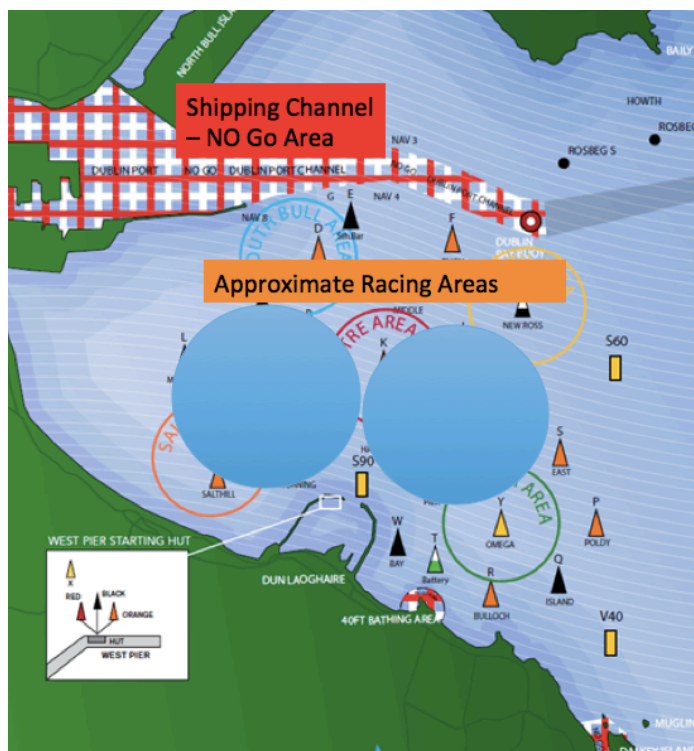
23. Titles & Prizes – paragraph 23.3 is changed to read as follows:

23.3 The Laser Radial Apprentice, Laser Radial Masters, Laser Standard Apprentice & Laser Standard Masters will be scored as separate fleets.

Change to SI's No.4

25 SAFETY [DP][NP] – a new paragraph 25.7 is added as follows:-

25.7- RESTRICTED AREA While sailing, all Lasers are prohibited from entering the Dublin Port Channel 'NO GO' areas (see attached picture showing No-Go area marked in red and white boxes):  
Dublin Port the area bounded by the following: Poolbeg Lighthouse, navigation marks 8, 6, 4, Dublin Bay Buoy, navigation marks 1, 3, 5, 7 and North Bull Lighthouse.



Con Murphy  
Director of Racing  
7<sup>th</sup> Sept 18